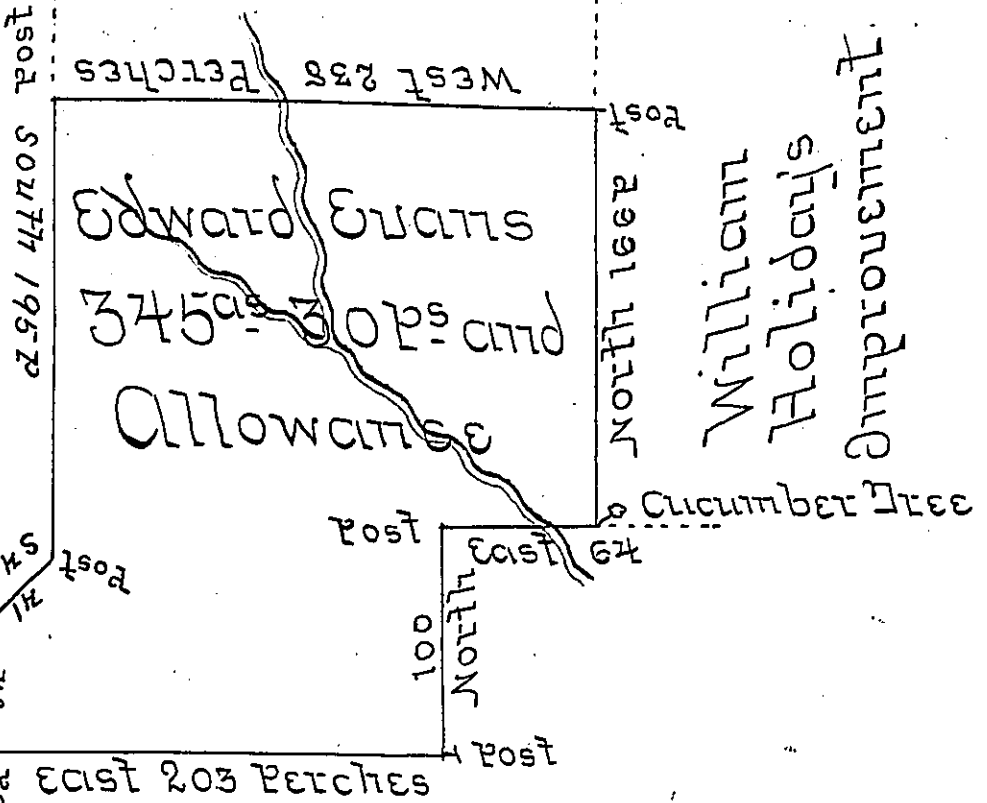


A. 63. 274

A. 27-13

Joseph Howell Junr
Vacant

Richard Smith Junr



Francis Clugage's Improvement

A Tract of a Tract of Land called Sugar Tree Grove (being part of a larger Tract of the same name) situate on the heads of the third or northern Branch of Clearfield Creek commonly called the lower Beaver Dam Branch about a Mile & a Quarter South from the SW corner of the Proprietaries Survey of the Chest adjoining Lands of Richard Smith Junr & Joseph Howell Junr and the Improvements of Francis Clugage & William Holiday in the County of Bedford Containing three hundred & forty five Acres & thirty Perches and the usual Allowance of six Per Cent for Roads &c Surveyed the 23^d & 24th Days of June 1773 for Edward Evans in pursuance of a Warrant granted to him the 13th Day of May in the year aforesaid by
 Do John Lukens Esqr / Thomas Smith D.S.
 Surveyor General -)

IN TESTIMONY that the above is a copy of the original remaining on file in the Department of Internal Affairs of Pennsylvania, made conformably to an Act of Assembly approved the 16th day of February, 1833, I have hereunto set my Hand and caused the Seal of said Department to be affixed at Harrisburg, this second day of September 1904.

George P. Brown
 Secretary of Internal Affairs.